

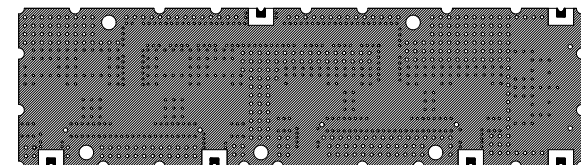
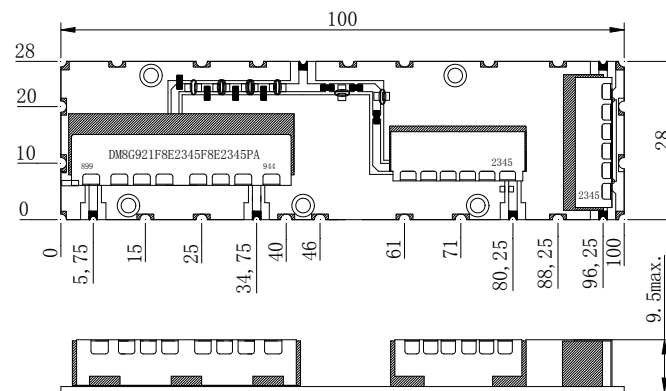
Product

DM8G921F8E2345F8E2345PA

Specification

ITEM	CH1	CH2	CH3	CH4
Center Frequency[fo]	875.0MHz	830.0MHz	1930.0MHz	2120.0MHz
Bandwidth[BW]	±5MHz	±5MHz	±10MHz	±10MHz
Insertion Loss in BW	2.2 dB max.	2.2 dB max.	2.2 dB max.	2.2 dB max.
Ripple in BW	1.0 dB max.	1.0 dB max.	1.0 dB max.	1.0 dB max.
Return Loss in BW	1.5:1Ratio max.			
Attenuation [Absolute Value]	30@835MHz 55@934~954MHz 45@2320~2370MHz	45@1150MHz 45@806~835MHz 55@889~909MHz 45@2320~2370MHz	35@2535MHz 40@2170MHz 55@889~909MHz 55@934~954MHz 15@2400~2483.5MHz	45@2535MHz 40@2170MHz 55@889~909MHz 55@934~954MHz 20@2400~2483.5MHz
In/Out Impedance	50Ω			
Input Power	5 w max.			
Operation Temperature	-40°C ~ +85 °C			

Dimension (mm)



IN/OUT
GROUND

UNIT: mm
TOLERANCE: +/- 0.3mm

Product

DM8G921F8E2345F8E2345PA

TEST GRAPH

