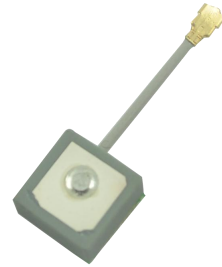


**Product:**

**DAM1575G2NO\_JL01V2.0**

**Appearance:**



### Specification

<b>Frequency Range</b>	L1: 1575.00 ± 1.023MHz
<b>DC Voltage</b>	3.0V
<b>Gain</b>	18 ± 3dB
<b>V.S.W.R</b>	2.0
<b>Noise Figure</b>	2.0dB
<b>DC current</b>	2.7 ± 1mA (at 3.0V)
<b>Impedence</b>	50 ohm
<b>RF cable lengthen</b>	Φ 0.81mm ± 0.1mm / L = 40 ± 2mm, L1 = 33 ± 2mm
<b>RF connector</b>	IPEX

**Dimension (mm)**

