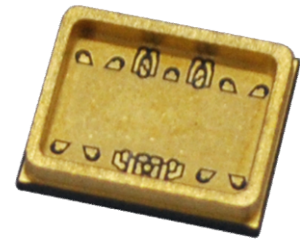


Product

GL-SUB-S71

Appearance



Specification

Dimension	9.6 mm*7.8*2.0 mm
Ceramic substrate	90% Alumina(black)
Metal Frame	Frame: 4J29 Butt plate: 4J42
Plating	Ni-Pd-Au
Welding adaptability	Parallel Seam Sealing, Wire bonding, BGA

Dimension (mm)

